

# Senate Approves \$912 Million COVID-19 Relief Package for Hospitality Employers, Educators and More

By Christine Zubeck

Harrisburg -- The Senate today approved a comprehensive \$912 million relief measure to help restaurants, hotels, schools and tenants impacted by the COVID-19 pandemic, according to Senator Mario Scavello (R-40).

The bill now goes to the House of Representatives for consideration.

Among other allocations, Senate Bill 109 sets aside \$145 million to support Pennsylvania's struggling hospitality industry as it copes with the devastation created by the COVID-19 pandemic and the governor's mandated closings and restrictions.

"Tourism in our region, including the restaurant and lodging fields that support it, has taken a serious hit over the course of this prolonged pandemic," Scavello said. "So many jobs have been lost and so much economic development has been disrupted. This funding provides a lifeline for employers and workers desperately trying to weather the storm."

The measure would transfer available funds from the Workers' Compensation Security Fund to the COVID-19 Response Restricted Account to provide county block grants to assist the employers in the hospitality field, including restaurants, taverns and hotels.

Grants would be provided in increments of \$5,000 up to \$50,000. Grants may not be used to pay for the same operating expenses already covered by a federal



Paycheck Protection Program loan or the state's prior \$225 million Small Business Assistance Program.

Senate Bill 109 also includes the \$197 million Federal Emergency Education Relief Fund, which would be used to create a \$150 million competitive grant program under the Department of Education to assist non-public schools that have been impacted by the pandemic and have not received government assistance.

The remaining \$47 million would provide: \$17.5 million for Career and Technical Centers, \$17.5 million for Intermediate Units, \$7 million for charter schools for the deaf and blind and approved private schools, and \$5 million for the State System of Higher Education to support its restructuring initiative.

"We previously allocated funding to help K-through-12 public schools operate during the pandemic, and this round of assistance covers many of the other educational entities that serve students in a wide variety of ways," Scavello said.

The bill also includes \$570 million in federal funding for rental and utility assistance, which would be proportionally distributed to counties based on their population.

The conditions set under Senate Bill 109 for the program are to ensure the funding is used prudently and responsibly with the intention of providing a financial safety net for tenants and landlords. Funding for the Rental and Utility Assistance program would be provided by federal Coronavirus stimulus money.

"If we are to get through this pandemic together, and we will, it's important that Pennsylvania allocate the federal funding that's been made available to us in a coordinated and efficient manner," Scavello said. "I am encouraged by the bipartisan Senate vote on this measure and hope the House of Representatives follows suit in a timely manner."

## The Can-Am Defender Pro DPS: The Ultimate Hunting and Farming Rig

By Can-Am

NORTHEASTERN PA. - Take a drive through Northeastern Pa. farm country, and you'll see a bunch of old, rusted-out little pickup trucks waiting for their next assignment. But more and more, those compact Jeeps, Toyotas, and Fords are being replaced by outsized UTVs, like the new Can-Am Defender Pro DPS.

This new wave of UTVs can handle all the work that old compact pickups can do, plus a lot more. They have options for heated and air-conditioned cabs, and are even Bluetooth compatible. The first thing you'll likely notice about the Defender Pro is its extra-large bed, which is 4.5 feet wide by 6 feet long. These dimensions give the machine serious hauling capacity to make it a real workhorse on the farm. And, if you need to move something really big and bulky, you can actually remove the side panels of the bed so it has a more flat-bed style.

It's also a more-than-capable hunting rig. Outfitted with selectable 2- or 4-wheel drive, Dynamic Power Steering, and 14-inch Maxxis Bighorn tires, the Defender will get you to even the most remote hunting spots. Because it's much lighter than a truck, it creates much less wear and tear on the landscape. The new generation of Defenders have 30 percent more rigidity and are five percent lighter. Treading softly on the landscape is critical when you're trying to avoid tearing up farmers' fields or trails.

The Defender packs a ton of utility into a relatively small package. It delivers a better, quieter ride, up to 82 horsepower, and a class-leading 69 lb-ft of torque.



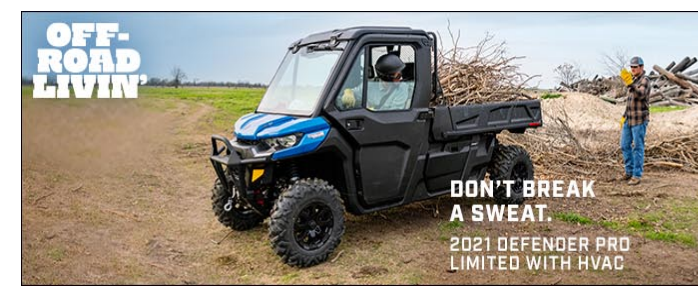
Specs: Engine: 82 hp/69 lb-ft, Rotax 976 cc, V-twin; Towing Capacity: 2,500 lb; Payload Capacity: 1,700 lb; Cargo Box Capacity: 1,000 lb; Wheelbase: 115.5 in.; Ground Clearance: 13 in.

Another advantage

the Defender has over that old, compact pickup is that it has a ton of clever storage space. There are gear buckets under the seats and in the dash, and there's even storage space below the gear box, which manually tilts to provide access.

The Defender's real advantage is that it's totally customizable. You can add extra racks over the bed, and Safari racks to the roof. You can add hard-sided doors, light bars, windshields, and mirrors, plows, hitches, and of course, a winch. You can trick out your own at Can-Am's website. Keep tweaking your build and price until you have the perfect machine for getting work done and going hunting.

The Defender Pro DPS is just one of 18 different Defender models new for 2021. There are six-seater models and even 6x6 models. For more info go to <https://www.hornsoutdoor.com> or call them for an appointment (610) 588-6614. 1169 Mount Bethel Highway Mount Bethel, PA 18343.



**can-am**  
DEFENDER PRO  
**HORN'S**  
OUTDOOR INC.  
DON'T BREAK A SWEAT.  
2021 DEFENDER PRO LIMITED WITH HVAC