

Knowlton Twp. Fire and Rescue Company #1 - Station 41

This morning (Feb. 23 2023) shortly after 8:00am Station 41 was dispatched to a motor vehicle accident (MVA) involving a tractor-trailer carrying hazardous materials cargo. This incident occurred at mile-marker 1.2 on Interstate 80 Eastbound in Hardwick Twp. (Affectionately referred to as the "Scrap Mile" because of the high volume of MVA's)

Mutual aid was dispatched for a Rescue Engine & Crew each from Station 33 Portland (PA) Hook & Ladder Co and Station 38 Hope Volunteer Fire Department. EMS mutual aid was necessary because of another on-going simultaneous emergency call. Mutual aid was obtained from Station 73 Independence First Aid Squad.

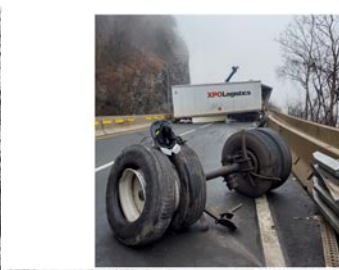
Upon arrival responders found the entire two eastbound lanes and shoulder blocked by wreckage and a jack-knifed and badly damaged tractor pulling a dual trailer. A quick assessment found there to be no injuries and no leakage from the hazardous materials on-board the trailers. There was however approximately 150 gallons of diesel fuel spilled from a ruptured saddle tank on the truck.

Fire crews immediately began deploying absorbent pads and booms to keep the flowing fuel from the storm drains that empty to the adjacent Delaware River. Station 22 Warren Co HAZMAT was requested as well to help with control of the spilled fuel. They deployed absorbent booms in the river to collect any runoff.

The highway remained closed eastbound for the remainder of the morning and well into the afternoon. Tow operators worked this entire time to right, stabilize, and move the tractor and trailers. The trailers were unloaded of freight and the area cleaned of wreckage and spilled fuel. NJSP and NJDOT handled traffic control and incident command flawlessly today. Thanks also to the National Park Service and the NJDEP.

Adding to the eastbound closure & detour delays was the fact that the primary alternate route of Rt 611 North in PA remains closed. This from multiple landslides that occurred many months ago. Numerous PA fire companies were dispatched to assist with traffic control on other alternate routes as traffic was backed up for miles.

Again we thank Portland & Hope Fire Dept's and the Independence Twp. EMS for your assistance today! Portland also handled an alarm call at a commercial business on Simpson Road - Knowlton Twp. as they were returning to their station.



- Area experts and heroes for sure!
- Station 33 Portland (PA) Hook & Ladder Co
 - Station 38 Hope Volunteer Fire Department.
 - Hazmat 22
 - Station 73 Independence First Aid Squad - for EMS mutual aid necessary because of another on-going simultaneous emergency call.
 - NJSP
 - NPS
 - NJDEP
 - Portland also handled an alarm call at a commercial business on Simpson Road - Knowlton Twp. as they were returning to their station
 - Numerous PA fire companies were dispatched to assist with traffic control on other alternate routes as traffic was backed up for miles.

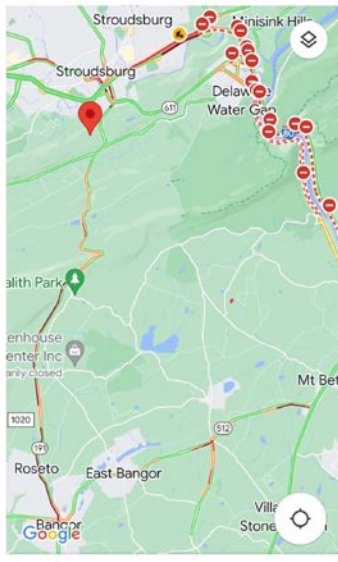


Hope Volunteer Fire Department Station 38 Fire

At 0829 Station 38 Fire was dispatched mutual aid to Route 80 at MM 1.4EB for an MVA involving a TT and HAZMAT.

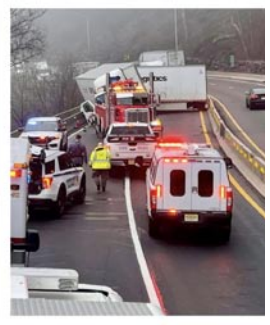
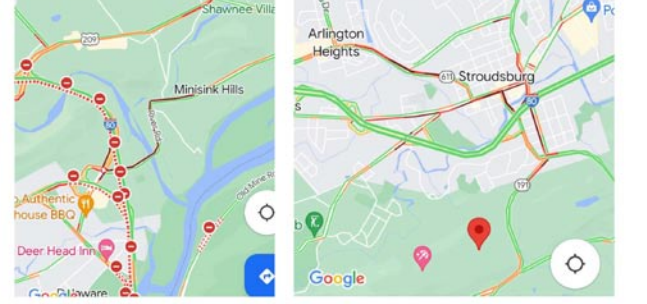
Rescue Engine 38-62 and crew joined 41Fire, Portland Fire, 73 Rescue, NJSP, NJDOT and Warren County HAZMAT in cleaning a diesel spill and preventing the leak from reaching the Delaware River.

The engine and crew stood by until the trailers were safely upright and the cargo was secure.



URGENT NEED: I-80 /611 DWG Corridor Study

- Feb. 23, 2023 Tractor Trailer cash in construction zone into construction barrier in the fog
- Hazmat clean up and barrier repair
- 7 hours of interstate traffic into local communities
- Our region has suffered with this for decades.
- S-Curve design issues contribute to the high crash rate - 2 lanes, no shoulders, sharp curves, seven entrance and exit ramps in a .5-mile section, and more.



PAVER SAVERS

NOW HIRING

A GREAT PLACE TO WORK AND GROW!

WE'RE THE PREMIER PAVER RESTORATION SPECIALIST WHO VALUE THE SUCCESS OF OUR TEAM MEMBERS. COME SEE WHY!

SCAN THE QR CODE FOR MORE INFO AND TO APPLY ONLINE TODAY OR STOP BY OUR OFFICE

1506 ROUTE 209, BRODHEADSVILLE, PA 18322

CLERICAL SUPPORT

- Part-time position
- General office tasks
- Flexible hours

CREW MEMBER

- Pressure washing
- Paver repair
- Sanding and sealing

FIELD SUPERVISOR

- Crew support
- Visit jobsites
- Client relations

SALES

- Part-time outside sales
- NO cold calls
- Flexible hours

"The small home with a big heart" www.cloverresthome.com

CL^{OV}ER Rest Home

BEST NURSING HOMES U.S. News 2013

NURSING HOME SERVICES
Personalized & Individualized

- ✳️ WARM, COZY, FRIENDLY, HOME-LIKE ATMOSPHERE
- ✳️ MEMORY IMPAIRED & DEMENTIA CARE; CARING & COMPASSIONATE STAFF IN A SMALL & SECURE SETTING
- ✳️ LONG TERM, SHORT TERM, RESPITE & HOSPICE CARE
- ✳️ QUALITY PHYSICAL, SPEECH & OCCUPATIONAL THERAPY
- ✳️ STIMULATING DAILY RECREATIONAL PROGRAMS
- ✳️ 24-HOUR CARE BY OUR OWN RN'S, LPN'S & CNA'S
- ✳️ CONTINUAL PHYSICIAN & PHARMACIST OVERSIGHT
- ✳️ DELICIOUS, NUTRITIOUS MEALS FOR SPECIAL DIETS
- ✳️ REGISTERED DIETICIAN & SOCIAL WORKER ON STAFF

★★★★★ A 5-STAR FACILITY!

1:1 CARE AVAILABLE! MEDICARE & MEDICAID ACCEPTED
LICENSED BY NJ DEPT. OF HEALTH & SENIOR SERVICES

LOCATED ON THE CORNER OF WASHINGTON & GREEN ST.
Conveniently Accessible from Exit #4 I-80, Route 94 & Rte. 46

Serving Monroe County, PA & Warren County, NJ

SCHEDULE A TOUR! **908.496.4477 | 908.496.4307**