

# BUSINESS DIRECTORY OF THE BLUE VALLEYTIMES "IF YOU NEED IT DONE THESE ARE"

BLUE VALLEY TIMES EMAIL- BVTIMES@RCN.COM PHONE- 610-452-9234 WEBSITE- WWW.BLUEVALLEYTIMES.COM ADDRESS- 900 NTH MAIN ST. BANGOR PA. 18013

**New Business??**  
**Want to get your**  
**name out there?**  
**New to the**  
**advertising world?**  
**Start in our business**  
**directory today!**  
**Call for rates**  
**610-452-9234!**

## SLATE BELT FLOOR & WALL COVERING

509 William St., Pen Argyl  
**610-863-5741**

FREE ESTIMATES & CUSTOM INSTALLATIONS

*Lowell & Cheryl Grubb, Proprietors*  
 Hours: Mon-Wed 9-5; Thurs 9-8; Fri 9-5; Sat 9-2



**Mark M. Kukla**  
 CERTIFIED PUBLIC ACCOUNTANT

31 West First St.  
 Wind Gap, PA 18091  
 Licensed in PA & NJ

Taxation  
 Business Consulting  
 Accounting Services

(p) 610.863.7776  
 (f) 610.514.4433  
 mmkcpa@epix.net

## COMPUTER NETWORKING & REPAIR

"OVER 20 YEARS OF EXPERIENCE"  
 James Albanese

HOME - BUSINESS - GOVT - EDUCATION  
 NON-PROFIT - SENIOR CITIZEN  
 SALES \* SERVICE \* SUPPORT

- \* Evaluation, Troubleshooting & Repair
- \* Hardware / Software Upgrades & Installation
- \* Data Backup & Recovery Services
- Documents, Pictures, Music, E-Mail, etc.
- \* Anti-Virus & Anti-Spyware Solutions
- \* Network Design, Project Mgt. & Installation
- \* In-Shop & On-Site Service & Support



[www.compnr.com/service@compnr.com](http://www.compnr.com/service@compnr.com)

368 Blue Valley Drive Bangor **610-588-8700**



**John T. Schimmel**  
 Public Accountant

1400 NORTHAMPTON STREET  
 EASTON, PA 18042-4024

Serving Easton, Lehigh Valley, Northampton &  
 Lehigh Counties, parts of Monroe County & New Jersey

- P. (610) 253-4000
- F. (610) 258-3294
- TF. (800) 370-8294

Email: [john\\_schimmel@yahoo.com](mailto:john_schimmel@yahoo.com)

Website: [www.johntschimmelpa.com](http://www.johntschimmelpa.com)

## Slate Belt Energy



We offer proven solutions to  
 problems that exist in  
 every house.

It isn't asking too much to  
 be comfortable in your home.

**610-599-8832**

Save up to 40% on utility bills starting today

Visit us online at - [www.SlateBeltEnergy.com](http://www.SlateBeltEnergy.com)

## GARAGE DOOR TUNE-UPS

We will replace your:

Springs, Cables, Rollers & Pulleys  
 and make your door like new again!



Garage Doors

570-424-0953

STARTING AT

**\$126**

**When it comes**  
**to housing,**  
  
**little things**  
**shouldn't make**  
**a difference.**

If you have children and a landlord refuses to rent to you, requires a higher security deposit, limits the use of facilities, or says you can only live in certain areas of a housing complex... that could be discrimination. And housing discrimination is against the law.

**FAIR HOUSING IS THE LAW!**



Fair Housing Council of  
 Suburban Philadelphia

Phone: (267) 419-8918

[www.fhcsp.com](http://www.fhcsp.com)



EQUAL HOUSING  
 OPPORTUNITY

## State Farm®

Providing Insurance and Financial Services

Home Office, Bloomington, Illinois 61710



**Debbie Pettinari**

106 S. Broadway  
 Wind Gap, PA 18091-1424  
**610-881-4433**



**SCHMIDT**  
 FUNERAL HOME PC  
 Since 1911



202 West Street  
 Wind Gap, PA 18091  
 (610) 863-5429



407 Bevidere Street  
 Nazareth, PA 18064  
 (610) 759-2650

Jane A. Follweiler FD, Supervisor  
 Patricia A. Werner FD, Supervisor

[schmidtfuneralhomepc.com](http://schmidtfuneralhomepc.com)

# SPOTTED LANTERNFLY



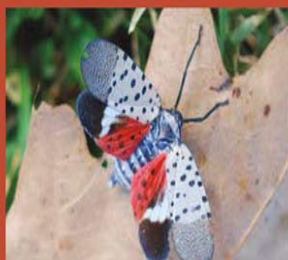
Adult (with wings closed) can be found July–December



Nymph (early stage) can be found late April–July



Egg mass (fresh) can be found October–December



Adult (with wings open) can be found July–December



Nymph (late stage) can be found July–September



Egg mass (older) can be found January–June

THE PEOPLE YOU SHOULD BE CALLING!

CONTACT US TO GET ON THIS PAGE TODAY!!





# Ed's Auto

1109 Blue Valley Dr. (Rt. 512), Pen Argyl Pa.

**610-881-4440**

**Open 8am - 6pm**

PA. Inspection and Emission Inspection

**OPEN 7 DAYS A WEEK**

**Bargin Tires In Stock**  
15 & 16 Inch

**50% Off Emissions Testing**

## HELP WANTED

Ed's Auto is looking for FULL TIME  
experienced mechanic, paying top dollar.

Diagnostics knowledge a plus  
**Call 610-881-4440**

**Spring Special**

**Radiator Flush**

**Water Pump**

**Timing Belts**

**4 Wheel Alignment**

**TOWING SERVICE 24HRS**

**Affordable  
Body Shop**  
All Paints Mixed Onsite



**HORN'S  
OUTDOOR INC**



Cub Cadet • Kawasaki • Scag • Polaris • Ski-Doo • Can-Am • Husqvarna



Cub Cadet XT Enduro Series

**Spring  
is Here**



Yamaha  
Generators



Yamaha  
pressure washers



Husqvarna  
Chain saw

**HELP WANTED**  
**Sales and Parts**  
**Apply Within**

Our selection of off-road and lawn equipment includes Polaris ATVs, Ranger utility vehicles, and snowmobiles; Ski-Doo snowmobiles; Husqvarna power equipment and mowers; Can-Am ATVs, Spyders and UTV's; Scag Commercial Mowers; Cub Cadet lawnmowers and tractors; Yamaha generators and pressure washers.

1169 MOUNT BETHEL HWY, MOUNT BETHEL PA 18343

**Hours:**

Phone: (610) 588-6614 Fax: (610) 588-2343 email: info@hornsoutdoor.com

Mon, Tue, Fri 9-5, Wed, Thurs 9-6, Sat 9-1

**www.hornsoutdoor.com**