

**BUSINESS DIRECTORY OF THE BLUE VALLEY TIMES "IF YOU NEED IT DONE THESE ARE"**

BLUE VALLEY TIMES EMAIL- BVTIMES@RCN.COM PHONE- 610-452-9234 WEBSITE- WWW.BLUEVALLEYTIMES.COM ADDRESS- 900 NTH MAIN ST. BANGOR PA. 18013

**New Business??  
Want to get your  
name out there?**

**New to the  
advertising world?**

**Start in our business  
directory today!**

**Call for rates  
610-452-9234!**

**SLATE BELT  
FLOOR & WALL  
COVERING**

**509 William St., Pen Argyl  
610-863-5741**

**FREE ESTIMATES & CUSTOM INSTALLATIONS**

*Lowell & Cheryl Grubb, Proprietors*  
Hours: Mon-Wed 9-5; Thurs 9-8; Fri 9-5; Sat 9-2

**COMPUTER  
NETWORKING &  
REPAIR**

"OVER 20 YEARS OF EXPERIENCE"  
James Albanese

HOME - BUSINESS - GOV'T - EDUCATION  
NON-PROFIT - SENIOR CITIZEN  
SALES \* SERVICE \* SUPPORT

- \* Evaluation, Troubleshooting & Repair
- \* Hardware / Software Upgrades & Installation
- \* Data Backup & Recovery Services
  - Documents, Pictures, Music, E-Mail, etc.
- \* Anti-Virus & Anti-Spyware Solutions
- \* Network Design, Project Mgt. & Installation
- \* In-Shop & On-Site Service & Support



www.compnr.com/service@compnr.com  
368 Blue Valley Drive Bangor **610-588-8700**

**John T. Schimmel**  
Public Accountant  
1400 NORTHAMPTON STREET  
EASTON, PA 18042-4024

Serving Easton, Lehigh Valley, Northampton & Lehigh Counties, parts of Monroe County & New Jersey

• P. (610) 253-4000  
• F. (610) 258-3294  
• TF. (800) 370-8294  
Email: john\_schimmel@yahoo.com  
Website: www.johntschimmelpa.com



**Mark M. Kukla**  
CERTIFIED PUBLIC ACCOUNTANT

31 West First St.  
Wind Gap, PA 18091  
Licensed in PA & NJ

Taxation  
Business Consulting  
Accounting Services

(p) 610.863.7776  
(f) 610.514.4433  
mmkepa@epix.net

**Slate Belt Energy**



We offer proven solutions to problems that exist in every house.

It isn't asking too much to be comfortable in your home.

**610-599-8832**

Save up to 40% on utility bills starting today

Visit us online at - www.SlateBeltEnergy.com

**GARAGE DOOR TUNE-UPS**

We will replace your:  
Springs, Cables, Rollers & Pulleys  
and make your door like new again!



Garage Doors

**STARTING AT**

**\$126**

570-424-0953

**When it comes  
to housing,**



**little things  
shouldn't make  
a difference.**

If you have children and a landlord refuses to rent to you, requires a higher security deposit, limits the use of facilities, or says you can only live in certain areas of a housing complex... that could be discrimination. And housing discrimination is against the law.

**FAIR HOUSING IS THE LAW!**



Fair Housing Council of  
Suburban Philadelphia

Phone: (267) 419-8918

www.fhcsp.com



EQUAL HOUSING  
OPPORTUNITY

**State Farm®**

Providing Insurance and Financial Services  
Home Office, Bloomington, Illinois 61710



**Debbie Pettinari**

106 S. Broadway  
Wind Gap, PA 18091-1424  
**610-881-4433**



**SCHMIDT  
FUNERAL HOME PC**  
Since 1911



202 West Street  
Wind Gap, PA 18091  
(610) 863-5429

407 Belvidere Street  
Nottingham, PA 18064  
(610) 759-2650

Jane A. Follweiler FD, Supervisor  
Patricia A. Werner FD, Supervisor

schmidtfuneralhomepc.com.

**SPOTTED LANTERNFLY**



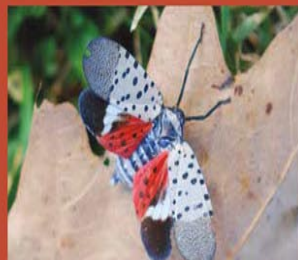
Adult (with wings closed) can be found July-December



Nymph (early stage) can be found late April-July



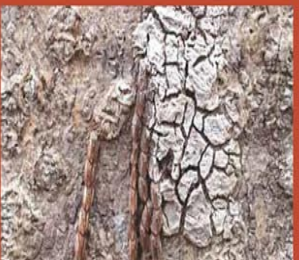
Egg mass (fresh) can be found October-December



Adult (with wings open) can be found July-December



Nymph (late stage) can be found July-September



Egg mass (older) can be found January-June

THE PEOPLE YOU SHOULD BE CALLING! CONTACT US TO GET ON THIS PAGE TODAY!!





# Ed's Auto

1109 Blue Valley Dr. (Rt. 512), Pen Argyl Pa.  
**610-881-4440**  
 Open 8am - 6pm  
 PA. Inspection and Emission Inspection

**OPEN 7 DAYS A WEEK**

**Bargin Tires In Stock**  
 15 & 16 Inch

**50% Off Emissions Testing**

## HELP WANTED

Ed's Auto is looking for FULL TIME experienced mechanic, paying top dollar. Diagnostics knowledge a plus  
**Call 610-881-4440**

**Spring Special**

**Radiator Flush**

**Water Pump**

**Timing Belts**

**4 Wheel Alignment**

*Affordable  
 Body Shop  
 All Paints Mixed Onsite*

**TOWING SERVICE 24HRS**



# HORN'S OUTDOOR INC



Cub Cadet • Kawasaki • Scag • Polaris • Ski-Doo • Can-Am • Husqvarna



Cub Cadet XT Enduro Series

**Spring  
 is Here**



Yamaha  
 Generators



Yamaha  
 pressure washers



Husqvarna  
 Chain saw

**HELP WANTED**  
**Sales and Parts**  
**Apply Within**

Our selection of off-road and lawn equipment includes Polaris ATVs, Ranger utility vehicles, and snowmobiles; Ski-Doo snowmobiles; Husqvarna power equipment and mowers Can-Am ATVs, Spyders and UTV's; Scag Commercial Mowers; Cub Cadet lawnmowers and tractors; Yamaha generators and pressure washers.

1169 MOUNT BETHEL HWY, MOUNT BETHEL PA 18343

**Hours:**

Phone: (610) 588-6614 Fax: (610) 588-2343 email: info@hornsoutdoor.com

Mon, Tue, Fri 9-5, Wed, Thurs 9-6, Sat 9-1

**www.hornsoutdoor.com**