

Own A Piece Of Martin Tower With Commemorative Bricks From National Museum Of Industrial History

By Glenn Koehler

BETHLEHEM - Thousands of people traveled from all over to see the implosion of Martin Tower, the historic former headquarters of Bethlehem Steel in May. Now you can own a piece of the landmark building in the form of a commemorative brick from the National Museum of Industrial History.

Retrieved from the tower after the implosion, the bricks were part of the loading dock and parking deck structure on the ground floor of the building. Volunteers and museum staff worked to load the bricks and bring them to the museum in July, securing a way for current and future generations to own a piece of history.

"This is a unique opportunity to own a small part of one of the most historic events to occur in the Lehigh Valley in some time," said Kara Mohsinger, President and CEO of the museum. "We collaborated with the property owners to make this happen and we're thankful to them for making this possible."

The bricks include a commemorative plaque and will cost \$25 each. One hundred percent of the proceeds will go to the museum, helping to pay for educational programs and future exhibits. Bricks can be purchased online at <http://nmih.org/martintower> or at the museum and are available starting Friday, August 2nd.

Due to an already high interest, the museum may take names and payments for brick reservations before the full allotment is prepared with the commemorative plaques. Please contact the museum for immediate availability and reservation questions by calling Deedee Riffle, Coordinator of Visitor Experiences and Events Coordinator, at 610-694-6637.

About NMIH

A Smithsonian Institution-affiliate, the National Museum of Industrial History is dedicated to preserving America's rich industrial heritage. Housed in an 18,000-square-foot, 100-year-old former Bethlehem Steel facility on the largest private brownfield in America, the Museum is home to exciting exhibits, engaging programs and amazing history. Learn more at nmih.org.





Summer is Here



Need storage to clean out cluttered spaces, or just make room. Easy access for storage of vehicles and motorcycles.?

Come in and check out our low prices and SPECIALS!

INN TOWN STORAGE



Center of Town
"Visit our Facility"

7 DAYS A WEEK 7AM-10PM

610-863-9806 249. S BROADWAY WIND GAP 18091
Center of Town- Behind Square One

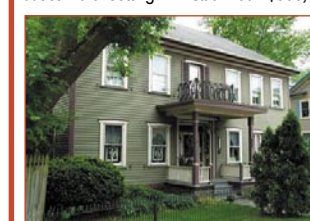




PRICE REDUCTION! Equestrian enthusiasts will love this 3+ acres & house w/rustic charm & modernizing updates. 4 beds & 3 full baths, updated kitchen w/center island & granite counters. Private deck, small barns & outbuildings, a substantially sized above ground pool, detached garage with bonus rooms, garden, horse stable & more. Located near major roads, within 10 minutes to NJ but still rural setting! **MLS#614602 \$308,000**



NEW LISTING! This totally rehabbed 2 bedroom ranch home, features an open living concept with solid hardwood flooring throughout, granite kitchen counter tops, matching stainless steel appliances, tiled bathroom and much more! **MLS#619105 \$139,000**



PRICE REDUCTION! BEAUTIFUL VIEWS from this meticulously restored 1843 farmhouse nestled on the banks of the Delaware River Find a full, eat-in upgraded Chef's kitchen, large rooms, original hardwood floors, 8 bedrooms. 3.5 baths, 1st floor laundry, Parlor & Arbor Rm w/ French doors. Riparian rights. Walk to the Historic town of Belvidere, NJ. **MLS#607045 \$375,000**

COMMERCIAL LEASE IN HEART OF BANGOR- BRAND NEW RENOVATION- many uses including professional office space, retail, and more. Owner has renovated this mixed use building. Great visibility! Offering 1400 sq ft with two bathrooms, first floor space, open floor plan, alarm and A/C. **MLS#599635 \$800/month**



Your Hometown Real Estate Team

2418 N. Delaware Drive, Mt. Bethel PA 18343
Phone: 570-897-7325 Fax: 570-897-7303







SUMMER

Smart Fun!





CAMPS, SPECIAL EVENTS, GIRAFFE FEEDINGS, AND ALL THINGS WILD!

*Open 10:00 AM - 4:00 PM

#KNOWPLASTICS

   @LVZOO

LVZOO.ORG

Voting Machine Demonstrations in Northampton County

By Becky Bartlet

EASTON - Lamont McClure and the Department of Elections will hold demonstrations of the new Election Systems & Software (ES&S) ExpressVote XL voting machines at sites around Northampton County before the November 5th election.

Members of the public will be able to cast a mock ballot so they can see how the machine functions. Employees from the Election Office will be on hand to provide guidance and answer any questions.

An ExpressVote XL machine will also be on display in the Rotunda of the County Courthouse at 669 Washington Street Easton from 10 AM to 3 PM, Monday through Friday. Citizens who wish to fill out a mock ballot on the machine may do so at the Elections Office located on the first floor.

County Council voted to approve the purchase of the ES&S ExpressVote EL machines at their May 16th meeting for the price of \$2,879,377.00.

Demonstration Dates/Times/Locations

August 6th Tuesday 6:00pm - 7:15pm Easton Summer Cinema Lafayette College, Buck Hall 219 N. 3rd St. Easton, PA. 18042

August 13th Tuesday – August 16th Friday 5:00pm – 11:00pm Blue Valley Farm Show@ the Block Building, 707 American Bangor Rd. Bangor, PA. 18013

August 29th Thursday 11:00am – 12:30pm Northampton Community College Partner Fair, 3835 Green Pond Rd. Bethlehem, PA. 18020 @ the Quad between College Center and Kopecek Hall

September 3rd Tuesday 3:30pm – 6:30pm Bath Borough Municipal Building, 121 S. Walnut St. Bath, PA. 18014

September 4th Wednesday 11:15pm – 2:45pm Easton Area Community Center,

901 Washington St. Easton, PA. 18042

September 7th Saturday 11:00am – 1:00pm Easton Public Market, 325 Northampton St. Easton, PA. 18042

September 9th Monday 10:00am – 1:00pm Bethlehem City Hall, 10 East Church St. Bethlehem, PA. 18018

September 13th Friday 9:00am-11:00am Cherryville Senior Center @ Hope Lutheran Church, 4131 Lehigh Dr. Cherryville, PA. 18035

September 16th Monday 10:00am – 1:00pm Nazareth Memorial Library 295 East Center St. Nazareth, PA. 18064

September 18th Wednesday 9:00am – 11:00am Slate Belt Senior Center, 707 American Bangor Road Bangor, PA. 18013

September 19th Thursday 11:00am – 1:00pm Northampton Senior Center, 902 Lincoln Ave. Northampton, PA. 18067

September 25th Wednesday 12:00pm – 2:00pm Old York Rd Senior Center, 720 Old York Rd. Bethlehem, PA. 18018

September 28th Saturday 11:00am – 1:00pm Easton Public Market, 325 Northampton St. Easton, PA. 18042

September 30th Monday 10:00am – 1:00pm Bethlehem City Hall, 10 East Church St. Bethlehem, PA. 18018

October 3rd Thursday 12:30pm – 2:30pm Cherryville Senior Center @ Hope Lutheran Church, 4131 Lehigh Dr. Cherryville, PA. 18035

October 5th Saturday 12:00pm – 2:00 pm Hanover Township Community Center-Fall Festival, 3660 Jacksonville Rd. Bethlehem, PA. 18017



After hours 24/7 number: [Carbon Monroe Pike Referral Center](#) at 1-866-824-3578. During regular business hours call: [Carbon County Referral Center](#) Toll Free: (866) 824-3578. [Monroe County Catholic Social Services](#): (570) 517-0892

[Pyramid Healthcare Bartonsville Outpatient](#): (888) 694-9996. [Pike County Catholic Social Services](#): (570) 296-1054

[Carbon County Provider](#): PA Treatment and Healing (PATH), 335 N. Fourth Street, 2nd Floor, Lehigh, PA. 18235. (610) 377-8870.

[Northampton County Drug & Alcohol Division](#) - Located at 2801 Emrick Blvd, Bethlehem, PA 18020. 610-829-4725. A case manager is available Monday through Friday from 8:00 am to 5:00 pm to provide you with assistance on accessing services for substance abuse. If you do not have health insurance and are in financial need, this office may also help you get the funding for the services that are necessary.

Don't let Heroin tear your family apart. GET HELP.
[Carbon-Monroe-Pike Drug and Alcohol Commission's Mission](#): "To promote a community where recovery matters and strength and dignity is given to those affected by drug and alcohol use."

GET HELP NOW