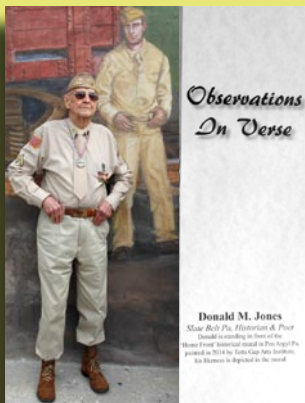


# A Poem from the Archives of Donald Jones

*Exclusively in the Blue Valley Times*



## GIVING

The Lord bestows His love on the human race,  
And all that we have is by His grace,  
The pool and the hungry need our care,  
And if we love Him we'll want to share.

There are so many in want and need  
There are millions of people we can feed.  
So share your blessings, it's the least you can do  
Enjoy the warm feeling that comes over you.

## Waste Management Donates

Continued from page 1

economic development and nature & the environment.

The Blue and White Scholastic Foundation gave their donation to Sister Maria Luz, Principal Immaculate Conception School in Pen Argyl for scholarships.

Immaculate Conception School provides quality, Christ-centered education from pre-kindergarten through eighth grade. In partnership with families and through a well-balanced curriculum, their students are encouraged to embrace academic excellence, social responsibility and spiritual growth and welcome all faiths, ethnic backgrounds and cultures. They are located 290 W. Babbitt Ave., Pen Argyl, PA. (610) 863-4816, Email: icsoffice@ptd.net.

"Waste Management has a history of supporting education in the Slate Belt. We believe that investing in our youth, is investing in our future. The Blue and White Scholastic Foundation and Waste Management partnership has allowed dozens of students to attend catholic school, who might not have been able to due to budget restrictions." commented Waste Management's Community Relations Manager, Adrienne Fors.

Waste Management of Pennsylvania is dedicated to environmental protection, education and supporting the communities where we operate. Since the EITC program was launched, Waste Management has made grants worth over \$16 million that have improved the educational opportunities of thousands of public-school students and helped thousands of other children and young adults attend private schools.

# Slate Belt Floor & Wall Covering

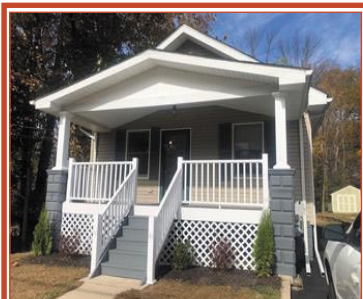
509 William St., Pen Argyl 610-863-5741

Carpet • Braided Rugs • Linoleum  
Vinyl Tile • Ceramic Tile  
Slate & Quarry Tile • Hardwood Floors  
Laminate Flooring • Wallpaper  
Custom Window Shades & Blinds



**FREE ESTIMATES & CUSTOM INSTALLATIONS**

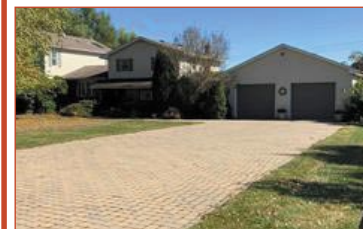
Hours: Mon-Wed 9-5; Thurs 9-8; Fri 9-5; Sat 9-2  
*Lowell & Cheryl Grubb, Proprietors*



**WELCOME HOME!** This home has been remodeled over the years with top notch work. All electrical, central air, new sidings, new windows & many more attributes have been added to this home. Large bright living room with open kitchen & dining area with cathedral ceiling. Large detached garage with attic storage. Relax on the large backyard deck as you listen to the babbling brook located next to the property. **MLS# 626916 \$165,000**



**JUST MOVE IN & RELAX!** This bright, and cheery home has 2 bedrooms and 2 full baths. Flooring and paint are updated and in great condition. A beautiful sunroom was added in 2008 to add space and sunshine to your living area. Enjoy the amenities that this 55 and older community provides including a pool with clubhouse, tennis court and pond. Lot fees include all the amenities along with water, sewer & trash. **MLS# 626787 \$85,000**



**WELCOME TO FRUTCHEY COURT.** Enjoy over 4200 sq ft of living space w/2 master suites in this beautiful split-level home situated on nearly 2 acres. The spacious backyard has ENGLISH TEA GARDENS, paved patios, oval pool w/ deck & more. The kitchen has granite counters, center Island, SS appliances including: double ovens, gas stove, refrigerator, & more. Close to NY/NJ & Lehigh Valley. **MLS# 624993 \$449,900**

**PRICE REDUCTION!! BEAUTIFUL VIEWS** from this meticulously restored 1843 farmhouse nestled on the banks of the Delaware River Find a full, eat-in upgraded Chef's kitchen, large rooms, original hardwood floors, 8 bedrooms, 3.5 baths, 1st floor laundry, Parlor & Arbor Rm w/ French doors. Riparian rights. Walk to the Historic town of Belvidere, NJ. **MLS#607045 \$319,000**



## Your Hometown Real Estate Team

2418 N. Delaware Drive, Mt. Bethel PA 18343  
Phone: 570-897-7325 Fax: 570-897-7303



Debbie Pettinari  
Agent

Hello,  
neighbor!

Please stop by and say, "Hi!"  
I'm looking forward to serving your needs for insurance and financial services.  
**Like a good neighbor  
State Farm is there.®**  
**CALL ME TODAY.**

106 S. Broadway, Wind Gap, PA. 18019  
Business: 610-881-4433 Fax: 610-881-4432  
Debbie.pettinari.wz73@statefarm.com



State Farm, Home Office, Bloomington, IL

Slate Belt Energy Services

# SBE

610-599-8832

**We service and install  
all brands and types  
of heating systems.**

**24 hour emergency service**

Low Interest financing. Credit cards accepted.  
Certified in all aspects of energy conservation.  
**www.SlateBeltEnergy.com**

## GARAGE DOOR TUNE-UPS

We will replace your:

**Springs, Cables, Rollers & Sheaves**  
and make your Door Work Like New Again!

**570-424-0953** **STARTING AT**  
cell: 570-460-4402 **\$126.00**



**LIKE US ON**  
**Blue Valley Times**

### Bangor Slater Band Boosters

#### BINGO AND TRICKY TRAY

Portland Fire Hall, 111 State St., Portland, PA

**BINGO**

**Sunday, November 24, 2019 ~ Doors open 11 AM**  
**Games begin at 1 PM. Refreshments available.**

- \* 20 Games of Bingo featuring products from Vera Bradley, Coach, Michael Kors, Thirty One, more.
- \* Tricky Tray, Special Raffles, 50/50 and Door Prizes
- \* Advance tickets (\$25 by Nov 18) includes 1 sheet tricky tray & special drawings. Call or text (610)703-5455
- \* Tickets also available at the door (\$25 bingo only).

## National Park Service Releases Draft Visitor Use Management Plan for Public Review and Comment

By Kathleen Sandt, Public Affairs Specialist

**BUSHKILL** - The National Park Service announced that the draft Visitor Use Management Plan (VUM Plan) for Delaware Water Gap National Recreation Area and Middle Delaware National Scenic and Recreational River is now available for public review and comment until December 6, 2019. The VUM Plan was developed with input from the public and park stakeholders and is designed to maximize the park's ability to provide recreational access and improve visitor experiences while protecting the parks' natural and cultural resources.



During the development of the draft plan, the NPS sought public feedback and input during two rounds of public meetings and public comment periods. "We are now asking our visitors, local residents, stakeholders, elected officials, and other interested parties to take one more look at the draft VUM Plan and the informational materials that we have provided and tell us what you think," said Superintendent Sula Jacobs. "Public involvement is essential to a successful planning effort. Our team really wants and needs to hear your thoughts and ideas in order to make this a useful plan. Your input helps ensure the park provides enhanced recreational access and improved experiences for our visitors, while also protecting the special places our visitors enjoy."

#### How to Participate

The draft VUM Plan is available for a 60-day public review and comment period that closes on December 6, 2019. All comments must be received by this date.

Send us a letter. Comments may be submitted by mail to Superintendent Sula Jacobs, ATTN: VUM Planning Team, 1978 River Road, Bushkill, PA, 18324.

Pop-up meetings will be announced on the park's Facebook page at [www.Facebook.com/DelWater-GapNPS](http://www.Facebook.com/DelWater-GapNPS).

For those without internet access, hard copies of the draft VUM Plan may be obtained by calling (570) 426-2418. Emailed comments or comments made on social media will not be accepted.

#### Goals of the draft VUM Plan

The National Park Service seeks to identify ways to achieve the following goals and objectives through the development and implementation of the draft VUM Plan:

- Minimize impacts to the park's natural and cultural resources and visitor experiences caused by visitor use;

- Enhance opportunities for the park's key visitor experiences;
- Assess the appropriateness of current and new/evolving visitor opportunities while considering visitor safety and resource protection;
- Align public expectations for use with availability of resources or infrastructure;
- Increase understanding of existing and emerging visitor interests, use characteristics, patterns, and trends;
- Manage visitor demand and expectations throughout the park;
- Identify and evaluate and various visitor use management strategies; and
- Project financial requirements and economic strategies to pay for each proposed action.

#### Proposed Actions

The draft VUM Plan details numerous proposed actions that the park would take as funds are available or to generate additional revenue. These proposed actions include but are not limited to the following:

- Transition from the current practice of charging an amenity fee at 6 discrete areas to charging an entrance fee for all park users; the majority of the funds collected would remain in the park for use on deferred maintenance projects and to pay for the implementation of the strategies identified in the VUM Plan. Entrance passes would cost \$25/car, \$20/motorcycle, and \$15/person for a 7-day pass; annual passes would be available for \$45.
- Add up to 20 new river campsites, improve facilities at existing campsites, and implement a reservation and fee system for river campsite use; campsites would cost \$16 per night;
- Explore the possibility of developing a new river access on the New Jersey side of the park; · Develop picnic sites that can accommodate large groups; implement a permit/reservation system to regulate use levels; and enhance and improve current picnic facilities;
- Improve the trail system by linking trail networks, enhancing accessibility, and diversifying experiences;
- Provide or improve universal access at key locations throughout the park to offer a range of recreational opportunities for a variety of users;
- Modernize delivery and strategically locate education and interpretation services including a mobile visitor center and increased partnerships.

December 11, 2019 - Wednesday

Mount Bethel  
Township Trip



A Longwood  
Christmas



The sounds of the season resonate throughout our indoor and outdoor Gardens during our musically-inspired display. Outside, the sounds of coos and aahs fill the air as a half-million lights brighten the night.



From the spectacular O-gauge model train display with trains running on nearly 2,000 feet of track, to a collection of rare antique dolls dressed in beautiful period clothing, plus thousands of whimsical Critters (ornaments and decorations handcrafted by Brandywine volunteers from natural materials) displayed on towering trees soaring up through the museum's three-story atrium, *A Brandywine Christmas* promises delightful family fun.



Lunch will be at the  
*Antica Italian Restaurant*

Total Price - \$72.00

No reservations accepted after Nov. 8th - (Friday)

Make checks payable to UMBT - cash also accepted

Remit to: UMBT - PO Box 520 - Mount Bethel, PA 18343

Drop off payment: 387 Ye Olde Hwy - Mount Bethel, PA 18343

Bus Pick Up: Mount Bethel Fire Company

2341 N Delaware Avenue - Mount Bethel, PA 18343

Departure: 8:30 AM - Return 8:30 PM

Brandywine Museum 1 Hoffmans Mill Rd, Chadds Ford, PA 610-388-8333

Antica Italian Restaurant, 1623 Baltimore Pike Chadds Ford, PA 484-770-8631

Longwood Gardens 1001 Longwood Rd, Kennett Square, PA 610-389-5223