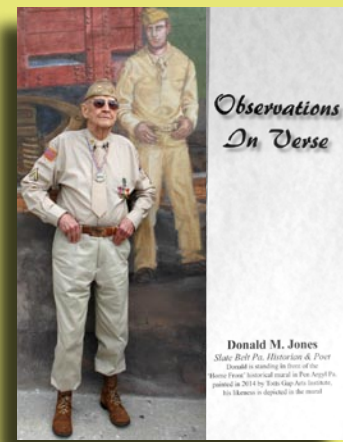


Slate Belt History From The Archives of Donald Jones

Exclusively in the Blue Valley Times



A SLATE QUARRY HISTORY FROM PEN ARGYL

PARSONS BROTHERS OPERATED THE DEEPEST QUARRY IN THE United States WITH A DEPTTOF MORE THAN 550 FEET..THE SLATE WAS""BLUE GREY""AND SAID TO BE THE FINIST SLATE EVER QUARRIED. IN 1945 25000 TONS OF ROCK FELL IN TO THE .HOLE. THE QUARRY SURVIVED ANS CONTINUED TO QUARRY SLARITE FOR MANY,MANY YEARS WITH SOME ACTIVITY TODAY. THIS INFORMATION IS FROM SLATERS, NEWSPAPERS BOOKS AND STORIES FROM MEMBERS OF SLATER FAMILIES.

SINCE 1929 **Albanese** CSRWI ICPI
 Garden Center & Greenhouse
 Rt. 512, 260 E. Moorestown Rd., Wind Gap, PA
 610-759-4699 www.albanesegardencenter.com
 HOURS: Mon.-Sat. 9 a.m.-5 p.m., Sun. Closed til Dec. 1, 2020
 YOUR 1-STOP GARDEN CENTER, FAMILY OWNED SINCE 1929

CUSTOMER APPRECIATION CANCELLED DUE TO COVID 19

25-50% OFF HALLOWEEN DECORATIONS
 TIN PUMPKINS, LANTERNS, OWLS, PUMPKINS, GOURDS, INDIAN CORN & STALKS, STRAW BALES

ORDER YOUR GRAVE SPRAYS & CEMETERY LOGS NOW
CHRISTMAS TREES COMING SOON

Wreaths (Cemetery & Door) Arriving Before Thanksgiving

25% OFF ORNAMENTAL GRASSES **FALL BULBS FOR SPRING FLOWERING ARE IN STOCK**

GET YOUR SHRUBS READY FOR WINTER
 Wilt Proof, Tree Wrap, Burlap, Hollytone

50% OFF AZALEAS, ROSE BUSHES, PERENNIALS

25% OFF FISH IN STOCK
 TIME TO WINTERIZE
 Now In Stock - Pond Deicers, Netting, Aerators, Fall Fish Food



Hello, neighbor!

Debbie Pettinari
Agent

Please stop by and say, "Hi!"
 I'm looking forward to serving your needs for insurance and financial services.
Like a good neighbor State Farm is there.®
CALL ME TODAY.

106 S. Broadway, Wind Gap, PA.18019
 Business: 610-881-4433 Fax: 610-881-4432
 Debbie.pettinari.wz73@statefarm.com



State Farm, Home Office, Bloomington, IL

WITH US, IT' S PERSONAL

Helping you reach your real estate goals throughout the Slate Belt, Lehigh Valley and the Poconos Mountains in Northeastern Pennsylvania

First-Time Homebuyers

We know that the whole process can be intimidating- but not to worry, we have worked with hundreds of first-timers. We have the skills and materials to make the process simple and straight-forward

Commercial

Whether you are just starting out or expanding your company, we are here to help you find the perfect space. Not sure where to start? Let us know what is important to you, and we will take it from there.

Residential

Upgrading, down-sizing, or simply ready for a change, we have access to every house listed by a Realtor throughout both the Lehigh Valley and the Pocono Mountains.

Selling made easy.

Here at Teel Realty we do the work so you don't have to. We take pride in our two decades of helping the public buy and sell their homes. With the ability market your home, professionally negotiate on your behalf, and guide your through the transition of selling your home, we are confident in our ability to provide you with the best service in the business.



Your Hometown Real Estate Team

2418 N. Delaware Drive, Mt. Bethel PA 18343
 Phone: 570-897-7325 Fax: 570-897-7303

Slate Belt Energy Services

SBE

610-599-8832

We service and install all brands and types of heating systems.

24 hour - emergency service

Low Interest financing. Credit cards accepted.
 Certified in all aspects of energy conservation.
www.SlateBeltEnergy.com

PennDOT 'Innovations Challenge' Deadline December 18

By Sean Brown

HARRISBURG – With the December 18 deadline rapidly approaching, the Pennsylvania Department of Transportation (PennDOT) reminds students in grades 9-12 regardless of their school's learning model to participate in the fourth annual PennDOT Innovations Challenge, which encourages students to use their problem-solving, creative and strategic-thinking abilities to solve real-world transportation challenges in a competition among their peers.

This year's Innovations Challenge asks students to develop an innovative and implementable solution that helps address Pennsylvania's transportation revenue shortfall by identifying potential new funding streams, a

PennDOT is directly responsible for nearly 40,000 miles of highway and roughly 25,000 bridges, roughly equal to the state-maintained road systems of New York, New Jersey, and all the New England states combined. Much of the funding to maintain that system comes from liquid fuels taxes, which are becoming increasingly unsustainable, especially considering additional impacts from the COVID-19 pandemic.

With vehicles becoming more fuel efficient and electric vehicles becoming more affordable, gasoline-based revenues can no longer generate the funds needed. Other options, including tolling and mileage-based user fees, are being explored. To meet the needs of its aging infrastructure, Pennsylvania needs to establish a funding stream that will inject an additional \$5 billion per year into its transportation system.

"We appreciate the unique challenges faced by schools during the pandemic," said PennDOT Secretary Yassmin Gramian. "Our educators are to be commended for encouraging the creative thinking needed for the Innovations Challenge."

Regional Innovations Challenge winners will be selected and invited to compete for the state championship.

The Transportation Policy and Education Foundation, an educational arm of the Associated Pennsylvania Constructors (APC), the American Council of Engineering Companies of PA (ACEC/PA) and the Pennsylvania Chapter of the American Traffic Safety Services Association (ATSSA) are providing a combined total award of \$5,500 to be divided among the first, second and third place statewide winning teams.

For complete Innovations Challenge details, visit www.penndot.gov/innovation. Again, the submission deadline is December 18, 2020.



pennsylvania
DEPARTMENT OF TRANSPORTATION

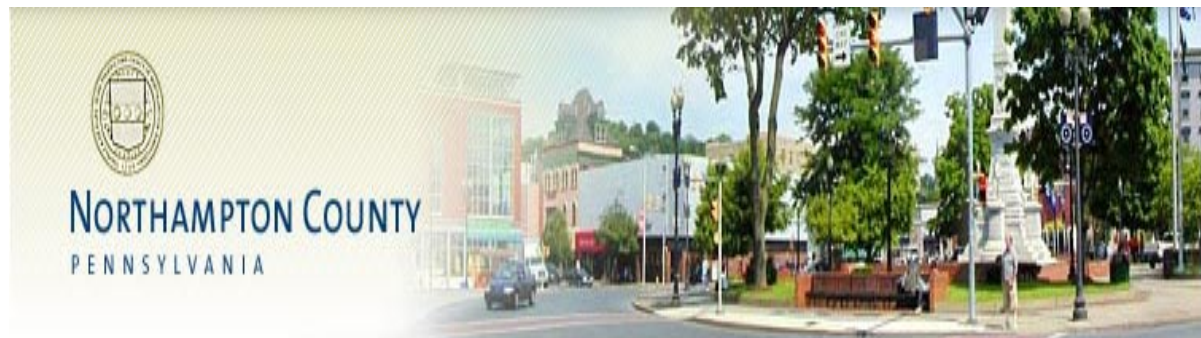
Slate Belt SHARPENING SERVICE

Don't Replace It - **SHARPEN IT !!**

SHEARS	KITCHEN / CHEFS
SALONS / BEAUTICIANS	SPORTSMAN / UTILITY
BARBERS / GROOMERS	OUTDOOR EQUIPMENT
SCISSORS	MOWERS / CHAINSAW
SEWING / CRAFT	WOODWORKERS
KNIVES	CHISELS / GOUGES
	PLANERS

***I.S.S.A. CERTIFIED SHARPENER WITH 40 YEARS EXPERIENCE* SPECIALIZING IN HIGH END CONVEX SALON SHEARS AND CUTLERY**

310 ROSETO AVE ROSETO PA 18013
CALL or TEXT RON at 610-762-2018
slatebeltsharpening@gmail.com
Visit my Facebook page at
Slate Belt Sharpening Service For Rates And Services



Holiday Hours For Covid-19 Drive-through Testing Center

By Becky Bartlet

EASTON - Lamont McClure, the Department of Community and Economic Development, Emergency Management Services and Lehigh Valley Hospital-Coordinated Health Allentown Hospital (LVH-CHA) announce the schedule for the drive-through testing center at 3100 Emrick Boulevard, Bethlehem Township during the week of the Thanksgiving holiday (November 23-28, 2020): Monday 10AM – 4PM, Tuesday 12N – 6PM, Wednesday 10AM-4PM, Closed Thursday, Friday 10AM-2PM and Saturday 9AM- 12N.

"The virus is still active in our area. Testing at our drive-through center shows a positive rate of 7.6%," says Lamont McClure. "I encourage everyone to continue to wear masks, practice social distancing and get tested if they begin to show any symptoms."

A Physician's order is not required but, to be eligible for testing, individuals must report or display one or more CDC-recognized symptoms of COVID-19: fever, dry cough, shortness of breath, chills, muscle pain, headache, sore throat or loss of taste and/or smell. The drive-through site is open to everyone, but only residents of Northampton County will have the cost of testing covered by the County if they do not have health coverage. All testing will be through HNL Lab Medicine unless insurance requires an alternate laboratory. Participants should bring a photo ID and their insurance card, if they have one, with them to the testing site.