

The Giant Company To Help Feed Families This December

Donating 3,000 turkeys and \$35,000 to local hunger relief organizations

By Ashley Flower

WIND GAP – To help families in need enjoy a holiday meal, The GIANT Company is focusing its giving efforts this season on hunger relief, today announcing donations of 3,000 hams and \$35,000 to organizations combatting food insecurity in local communities.

“Sharing a meal together with family and loved ones is often the focal point of holiday celebrations, but too many families in our communities struggle to put food on the table,” said John Ruane, president, The GIANT Company. “The GIANT Company is proud to again partner with our food bank and hunger relief partners to help meet the increased demand they are facing, both now and year-round, and help families in need enjoy a holiday meal together.”

To ensure families have a holiday staple at their table, The GIANT Company is contributing 3,000 hams to 15 food banks and pantries across its operating area this month, including the following hunger relief partners:

Blue Ridge Area Food Bank, Verona, Va.
 Central Pennsylvania Food Bank, Harrisburg, Pa.
 Chester County Food Bank, Exton, Pa.
 CityTeam Chester, Chester, Pa.
 Helping Harvest Fresh Food Bank, Reading, Pa.
 Indiana County Community Action Program, Indiana, Pa.
 Lancaster County Food Hub, Lancaster, Pa.
 Manna on Main Street, Lansdale, Pa.
 Maryland Food Bank, Hagerstown, Md.
 New Britain Baptist Church, Doylestown, Pa.
 Philabundance, Philadelphia, Pa.
Second Harvest Food Bank, Nazareth, Pa.
 Shelter Services, Lewistown, Pa.
 St. Vincent DePaul Society of St. Catherine of Siena, Horsham, Pa.
 York County Food Bank, York, Pa.

The following organizations will also each receive \$5,000, for a total donation of \$35,000, from The GIANT Company to expand their food distribution efforts within their local communities for the holidays and beyond:

Christ Lutheran Church – REACH Community Meals, LaVale, Md.
 Community Markets Inc., Charles Town, W. Va.
 Friends of the Poor, Scranton, Pa.
 Garden of Health, North Wales, Pa.
 HANNA's Pantry, Inc., Harrisburg, Pa.
 Hazelton Integration Project, Hazelton, Pa.
 Neighbor to Neighbor community Development Corp, Sharon Hill, Pa.

“Community Markets Inc. is excited to partner with The GIANT Company to feed food insecure families on the Eastern Panhandle of West Virginia,” said Mark Peiffer, program manager, Community Markets Inc. “This donation will be used by Community Markets Inc. to purchase healthy food from the local MARTIN'S store which will be distributed to hungry Appalachian families in our community at an upcoming Food Box Giveaway. CMI is grateful for the investment made by The GIANT Company in our community.”

Customers can also join The GIANT Company to make a difference this holiday season. At any GIANT, MARTIN'S or GIANT Heirloom Market store, from Dec. 8 through 24, customers can donate free ham certificates at the register in-store or donate 400 CHOICE points online, for which The GIANT Company will make a \$10 donation at a local food bank. In addition, in all stores, customers can round up their purchase at checkout to benefit their local food bank or pantry or purchase reusable bags to benefit Feeding America®.



Northampton
County
Historical &
Genealogical
Society

HISTORIC DISTRICT WALKING TOURS

Every Saturday
2:00 PM
Sigal Museum

342 Northampton St. Easton



MINIMUM BID REAL ESTATE AUCTION

TUES., NOV. 28, 1 PM

42.84 ACRES

LOWER MT. BETHEL, PA

(BEING SOLD FROM TEEL AUCTION GALLERY, 1101 ALLEGHENY ROAD, MT. BETHEL, PA)

Directions: Head South on Delaware Drive South into the Town of Martins Creek, PA. Land Located on Delaware Drive on Right. Look for sign.

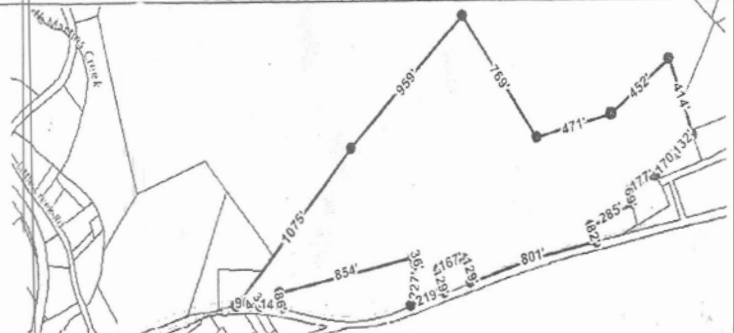
Highlights: Rare 42.84 Wooded Acres located on Delaware Drive just before the Martins Creek Stop Light. Taxes, according to tax records for 2023 are \$4,076.45. Easton Are School District, Zoned Agricultural. Land use, according to tax records, is Industrial. Parcel Number H10 16 5 0317.

Terms: MINIMUM BID AUCTION \$100,000. Certified or Bank Cashier's Check in the amount of \$10,000 (non-refundable deposit) due at the time of the auction. Balance due at closing in 45 days or before. Broker participation welcome to all registered brokers and realtors prior to the auction.

Sale Ordered By: DBS Foundation Holdings, Paul B. Shannon, Vice President and John Coles, Esq.

TEEL AUCTIONS

AU-002409-L. (570) 897-8335



WE BUY \$CRAP METAL!
JUNK CARS TOO!!!

J.F.R.



- Copper
- Brass
- Aluminum
- Stainless
- Lead
- Cast Iron
- Motor Blocks
- Light Iron
- Prepared Steel
- Export Steel
- Container Service

610-863-6071

www.jfrsalvage.com

M-F 7-4:30 • Sat 7-Noon

6500 Sullivan Trail

Wind Gap, PA 18091