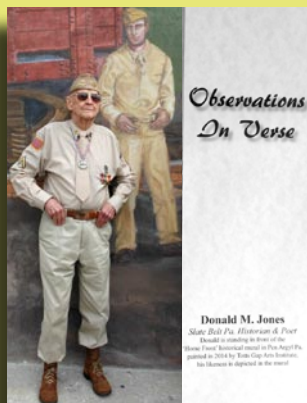


A Poem from the Archives of Donald Jones

Exclusively in the Blue Valley Times



WINTER WINDS

Blustery winds, cutting like the edge of cold steel,
Whipping the trees, turning them deathly grey,
Making its presence known, whistling in the wires
And chasing down chimneys and rattling windows,
Howling during the night, expressing its loneliness.
Rearranging the snow while creating spectacular scenes
As if to apologize for its bone chilling cold.
Cleaning the air, polishing the stars to a new brightness,
Driving the moon through snow banks of clouds.

Completing the Census is Easier Than Ever

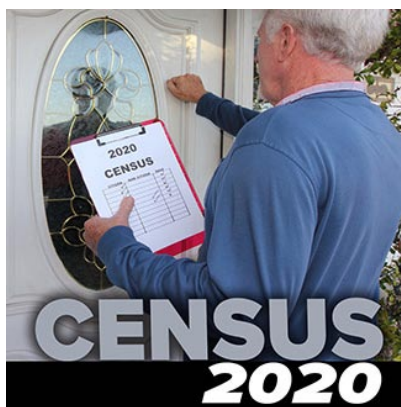
By Rep. Joe Emrick

BANGOR - Each decade, the federal government counts the number of people in each state to help determine how many seats the state gets in the U.S. Congress and how to distribute more than \$675 billion in funding to states, counties, municipalities, school districts and social service programs and organizations.

Being counted in the Census helps to improve our communities, roads, bridges, hospitals, schools, fire and police departments, parks, playgrounds and more.

Beginning in March, Census letters will be mailed. For the first time, people can respond to the Census online. There will also be a toll-free number so residents can share their information verbally. The traditional method of filling out the paper questionnaire will also be an option.

People can be confident that the Census Bureau will not share their information with anyone, including federal, state or local authorities of any kind, including law enforcement, immigration or landlords. There are no exceptions to this law, which is enforceable with five years in jail and a fine of \$250,000. Learn more at www.pa.gov/census/.



Slate Belt Floor & Wall Covering

509 William St., Pen Argyl 610-863-5741

Carpet • Braided Rugs • Linoleum
Vinyl Tile • Ceramic Tile
Slate & Quarry Tile • Hardwood Floors
Laminate Flooring • Wallpaper
Custom Window Shades & Blinds



FREE ESTIMATES & CUSTOM INSTALLATIONS

Hours: Mon-Wed 9-5; Thurs 9-8; Fri 9-5; Sat 9-2
Lowell & Cheryl Grubb, Proprietors



Debbie Pettinari
Agent

**Hello,
neighbor!**

Please stop by and say, "Hi!"

I'm looking forward to serving your needs for insurance and financial services.

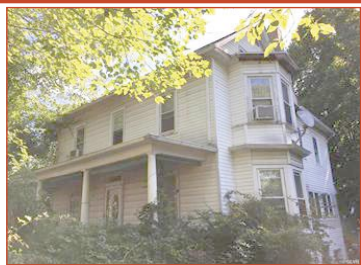
**Like a good neighbor
State Farm is there.®**

CALL ME TODAY.

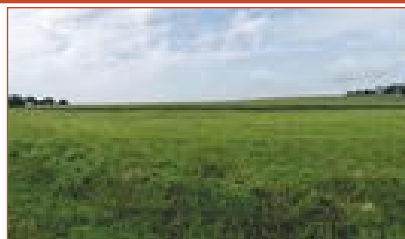
106 S. Broadway, Wind Gap, PA. 18019
Business: 610-881-4433 Fax: 610-881-4432
Debbie.pettinari.wz73@statefarm.com



State Farm, Home Office, Bloomington, IL



PRICE REDUCTION! - ONLY MINUTES TO RT 80! Located in the Village of Stone Church in Upper Mt. Bethel Township. Colonial with 1664 sq ft. has 4 bedrooms, large eat-in kitchen w/ breakfast bar, family room, living room, full basement, attic storage, two car garage, two sheds & more. Home needs some renovation. **MLS# 620764 \$99,900**



BUILDING LOT FOR SALE! Ideally located building lot in Lower Mount Bethel Township. This flat lot is surrounded by gorgeous farmland & offers fantastic views of all the surrounding lands. There are no builder or land restrictions! Property is zoned agriculture, so it's perfect for anyone looking to have a house & animals! **MLS# 619344 \$39,000**



POSSIBILITIES GALORE!! Solid one-bedroom home with an open concept, radiant heat plus setup for GEO Thermal but needing complete interior rehab. Expandable attic which could easily be converted into a second story. Exterior is concrete with stone accents all situated on a great open lot complete with utility shed. Perfect for anyone wanting privacy but, close to hospitals, shopping & entertainment. **MLS# 625869 \$100,000**

UPPER MT. BETHEL TOWNSHIP WAREHOUSE FACILITY- Offering over 16,696 square feet of space. Only minutes to Rt. 80 make this a perfect location for manufacturing/warehousing. Property currently has a tenant with a two-year lease that uses partial space. Off street parking. Situated on 1.5 acres. Great industrial property. Make your appointment today! **MLS# 601382 \$775,000**



Your Hometown Real Estate Team

2418 N. Delaware Drive, Mt. Bethel PA 18343
Phone: 570-897-7325 Fax: 570-897-7303



Slate Belt Energy Services

SBE

610-599-8832

**We service and install
all brands and types
of heating systems.**

24 hour emergency service

Low Interest financing. Credit cards accepted.
Certified in all aspects of energy conservation.
www.SlateBeltEnergy.com

Blue Valley Times

SERVING THE SLATE BELT, LOWER POCONOS AND NORTHERN N.J.
DAILY ONLINE WEEKLY IN PRINT

Visit us at www.bluevalleytimes.com

Our trained caregivers are responsible for providing clients with the best in home care to make your day to day life as simple as possible. Call us today and find out what we can do to help you.

Because There's No Place Like Home



LICENSED & BONDED INSURED

Our Services Include:

EOE

Meal Preparation • Transportation • Lt. Housekeeping
Personal Grooming & Dressing • Overnight Supervision • Companionship

KEEPING SENIORS INDEPENDENT

101 Timberlane Drive ~ Bangor, PA

610-881-4500 or 610-588-6000



LIKE US ON
Blue Valley Times



SATURDAY, FEBRUARY 8

THE EVENT CENTER
AT MOUNT AIRY CASINO AND RESORT
312 WOODLAND RD., MOUNT POCONO, PA
GET TICKETS AT TICKETFLY.COM & SHERMANTHEATER.COM
www.1964web.com

DePasquale Recommends Solutions to Help Veterans Find Good Jobs

By Gary Miller

HARRISBURG – Auditor General Eugene DePasquale today made six recommendations to help Pennsylvania's veterans get good jobs after leaving the military.

"Military veterans possess a lot of valuable experience that can benefit civilian employers," DePasquale said. "We need to do more to help veterans overcome the challenges they face and make a smooth transition into good jobs after their service to our nation ends."

To follow up on his audit of the state's workforce development system, DePasquale met with veterans and workforce development experts. Based on those meetings, DePasquale issued a report offering six recommendations:

- Greater coordination is needed between state and federal veterans programs.

- Congress and the Pennsylvania General Assembly should increase funding for job programs, veterans housing, mental health supports, healthcare, and services to disabled veterans.

- Study of professional licensing requirements for certain occupations should continue to determine if they can be streamlined to ease the

burden on veterans and military families who relocate while serving.

- State, federal and private agencies must work together to continue to remove the stigma of seeking mental health treatment within the veteran community.

- The state should continue to expand programs to assist veterans seeking education and training services.

- Pennsylvania must promote and encourage veteran preferences for those applying to colleges and universities.

"We owe it to the women and men who served to provide all available resources to help them find good jobs," DePasquale said. "I want Pennsylvania to become the model for how every state treats veterans when they transition to the civilian labor force."

At the state level, Pennsylvania CareerLink Offices offer free job counseling, training, referrals, and placement services. Eligible veterans receive priority in the referral to job openings and training opportunities, with disabled veterans receiving the highest priority.

Learn more about the Department of the Auditor General online at www.paauditor.gov.



The Back Room
At Comunale's Italian Market

Area's Premier Banquet Facility

(570) 897-5630 1 Mt. Bethel Plaza
2165 Mt. Bethel Highway Mt. Bethel, PA

Prices Starting At \$22 Per Person Includes Venue and Setup

Multiple Menu Options To Choose From To Accommodate Your Event From 35-110 Guests

Meals Are Handcrafted On The Premises

- Weddings
- Showers
- Banquets
- Birthdays
- Rehearsal Dinners
- Corporate Functions
- Luncheon Meetings
- Funerals

• In House DJ & Photo Booth Available, Space for Band • Plenty of Parking

• BYOB Beer & Wine (Ask For Details) • Handicap Accessible

