

HELP WANTED

Ed's Auto is looking for FULL TIME experienced mechanic, paying top dollar. Diagnostics knowledge a plus, Will TRAIN Call 610-881-4440

By State Rep. Joe Emrick

BANGOR - The Pennsylvania Department of Agriculture is encouraging all of us to do our part to combat the spread of the invasive spotted lanternfly.

Destroy those egg masses before the weather warms up for good and eggs hatch. Officials suggest power-washing equipment and vehicles, inspecting the undercarriages of vehicles and inspecting other hard surfaces such as patio furniture, grills or play equipment.

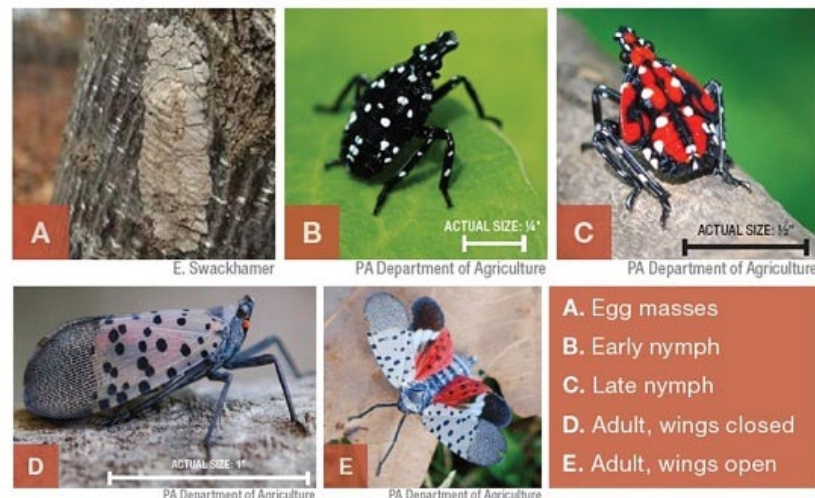
Spotted Lanternfly Why Do We Care

SLF is a serious invasive pest with a healthy appetite for our plants and it can be a significant nuisance, affecting the quality of life and enjoyment of the outdoors. If not contained, spotted lanternfly potentially could drain Pennsylvania's economy of at least \$324 million annually, according to a study carried out by economists at Penn State. The spotted lanternfly uses its piercing-sucking mouthpart to feed on sap from over 70 different plant species. It has a strong preference for economically important plants including grapevines, maple trees, black walnut, birch, willow, and other trees. The feeding damage significantly stresses the plants which can lead to decreased health and potentially death.

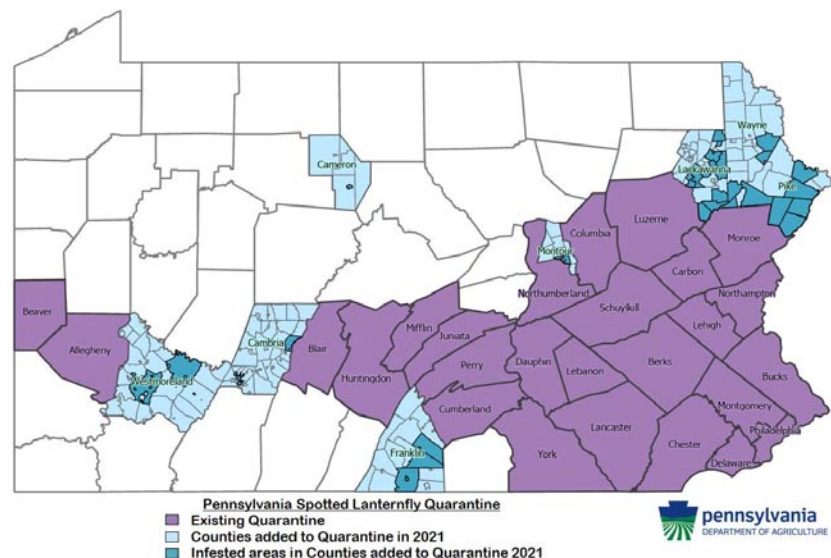
As SLF feeds, the insect excretes honeydew (a sugary substance) which can attract bees, wasps, and other insects. The honeydew also builds up and promotes the growth for sooty mold (fungi), which can cover the plant, forest understories, patio furniture, cars, and anything else found below SLF feeding.

Where is SLF Found?

SLF is currently found in 34 counties in Pennsylvania, all of which are under a state-imposed quarantine. The quarantine is in place to stop the movement of SLF to new areas within or out of the current quarantine zone and to slow its spread within the quarantine. The quarantine affects vehicles and other conveyances, plant, wood, stone products and outdoor household items. Counties within the quarantine zone: Allegheny, Beaver, Berks, Blair, Bucks, Cambria, Cameron, Carbon, Chester, Columbia, Cumberland, Dauphin, Delaware, Franklin, Huntingdon, Juniata, Lackawanna, Lancaster, Lebanon, Lehigh, Luzerne, Mifflin, Monroe, Montgomery, Montour, Northampton, Northumberland, Perry, Philadelphia, Pike, Schuylkill, York, Wayne, and Westmoreland. In addition to Pennsylvania, SLF is also found in New Jersey, New York, Ohio, Connecticut, Maryland, Delaware, Virginia, and West Virginia. Do your part to slow the spread by complying with the SLF quarantine relations.



- A. Egg masses
- B. Early nymph
- C. Late nymph
- D. Adult, wings closed
- E. Adult, wings open



Because There's No Place Like Home



LICENSED & BONDED INSURED

Our Services Include:

EOE

Meal Preparation • Transportation • Lt. Housekeeping
Personal Grooming & Dressing • Overnight Supervision • Companionship

KEEPING SENIORS INDEPENDENT

101 Timberlane Drive ~ Bangor, PA

610-881-4500 or 610-588-6000

SCHMIDT
FUNERAL HOME, PC

"Affordable Cremations & Funeral Services"

202 West Street
Wind Gap, PA 18091

610-863-5429

Jane Follweiler, FD Supervisor

schmidtfuneralhomepc.com

Blue Valley Times

Serving The Slate Belt, Lower Poconos And Northern N.J.

Visit Our Daily Media Online At:

www.bluevalleytimes.com

www.facebook.com/BlueValleyTimes

Phone: 610-452-9234
Email: bvtimes@rcn.com

News / Advertising Deadline
12 noon Fridays

900 N. Main Street., Bangor, PA 18013

Owner - Michael Ortoski / Michele Hanna
Publisher - Michael Ortoski
Sales - Michael Ortoski
Asst. Editor - Anne Brown
Graphic Design / Photography - MM4 Corp
Feature Writers - Peg R. Berger
Interns from Pen Argyl, Bangor and Stroudsburg H.S.

All submissions become property of Blue Valley Times