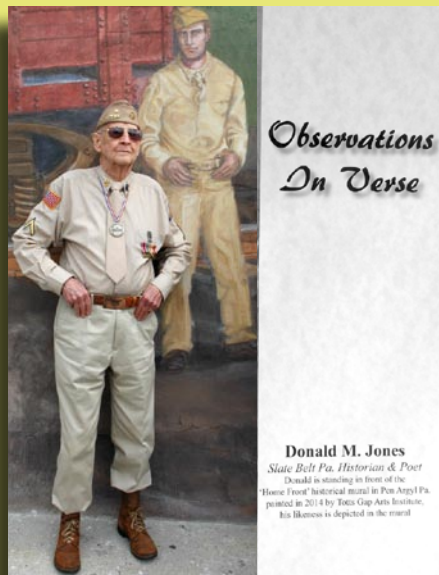


A Poem from the Archives of Donald Jones

Exclusively in the Blue Valley Times



SPRING COLORS

As the days of Spring draw near
Mother Nature's colors start to appear.
There's yellow in the willow trees
And the buds are turning red.
There's green in the tips of leaves
And in grass once brown and dead.
As the golden sunshine warms the earth
Creating these colors anew
Let's welcome this new season
With good riddance to winter blues.

Letter to the Editor

Wind Gap to Portland, ten towns and townships, are coming together to develop a multi-municipal comprehensive plan for the Slate Belt area. This can determine how their individual assets can be highlighted to fit a larger Slate Belt area plan. Setting us apart from the Lehigh Valley are our remaining historical rural communities, farmland and unique open spaces.

Currently Pennsylvania Municipal Planning Code dictates each municipality provide for all uses to avoid discrimination. A regional plan will accommodate all land uses by allowing each municipality to focus on its strengths. Ultimately all uses will be covered, by consensus of the participants within the area.

Funding for the endeavor is mostly covered by grants and contributions with a small assessment from each participating municipality. The expertise in planning with data and land use analysis is provided by Lehigh Valley Planning Commission.

This is particularly helpful for Upper Mount Bethel Township as changes are being made and discussed for high density housing, economic development, farm and open space protection. Planning for waste water disposal (PA Act 537), be it in ground or a treatment plant, for seven village centers in a forty-four square mile township would be more effective with the baseline data analysis provided by the proposed regional plan. If in fact the health, safety and welfare of residents is paramount after more than two hundred years of occupancy and growth, then waiting for the outcome of the multi-municipal plan should be acceptable to the residents who will be paying the bill. If, on the other hand, there is a rush to accommodate developers at the door, with limited citizen participation until recently pressured, then there is concern that those in power have determined our future for us. Let us do our part providing clean air and water, farm and forest regionally, accompanied by new thinking on sustainable jobs and tax base.

One of the main themes of the first meeting for multi-municipal planning was for public participation from beginning to end. Everyone should weigh in along the way, not wait to find out at end and derail the process. The point being that everyone has valid ideas and concerns that could be evaluated to provide an outcome that would lead to a higher level of success for attracting business. Slate Belt residents should be asking their local officials about this and staying involved over the next year as decisions are made and then brought to the group. Stand up to let your voice be heard and ultimately vote for your leaders. Don't allow someone else to decide for you.

Judy Henckel Upper Mt. Bethel

Slate Belt Floor & Wall Covering

509 William St., Pen Argyl 610-863-5741

Carpet • Braided Rugs • Linoleum
Vinyl Tile • Ceramic Tile
Slate & Quarry Tile • Hardwood Floors
Laminate Flooring • Wallpaper
Custom Window Shades & Blinds



FREE ESTIMATES & CUSTOM INSTALLATIONS

Hours: Mon-Wed 9-5; Thurs 9-8; Fri 9-5; Sat 9-2
Lowell & Cheryl Grubb, Proprietors



Debbie Pettinari
Agent

**Hello,
neighbor!**

Please stop by and say, "Hi!"
I'm looking forward to serving your
needs for insurance and financial services.
**Like a good neighbor
State Farm is there.®**
CALL ME TODAY.

106 S. Broadway, Wind Gap, PA. 18019
Business: 610-881-4433 Fax: 610-881-4432
Debbie.pettinari.wz73@statefarm.com



State Farm, Home Office, Bloomington, IL

Slate Belt Energy Services

SBE

610-599-8832

**We service and install
all brands and types
of heating systems.**

24 hour emergency service

Low Interest financing. Credit cards accepted.
Certified in all aspects of energy conservation.

www.SlateBeltEnergy.com

B I N G O

April 2
Portland Fire Co
Starts 7pm

April 3
Bushkill Twp Fire Co
Doors 5pm
Starts 7pm

April 4
Wind Gap Fire Co
Doors 5pm; Starts
6:45pm

March 30
Immaculate
Conception
Doors 11am;
Starts 1pm

March 31
St. Elizabeth Church
Starts 1pm

April 1
Kunkletown Fire Co
Progressive
Jackpot - 7pm

Donald Everett Hands the Helm Over

By Jim Johnston

WEST END - After 40 years as president of the West End Fair, Donald Everett has decided to step down and give the reigns over to someone else. The fair board was disappointed about his decision, but realized that he was determined, and that they could do nothing to change his mind.

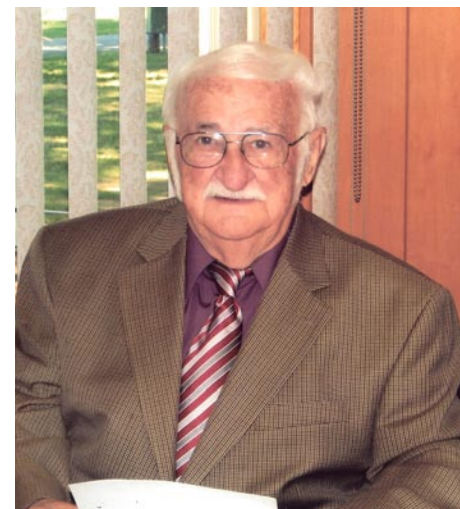
Therefore, they would like to give a sincere thank you to him for his dedicated service, and often long, difficult hours. Donald has endured many challenging situations, from being read his rights for an illegal quarter drop machine, to a devastating fire that destroyed the wooden main exhibit building during his first year in office.

In 1960 when his father died, Donald became a director and has shared his 59 years of acquired knowledge with fortunate fair members. He held other positions before becoming president, such as assistant secretary from 1965 – 1970 and from 1972 – 1976, and vice president in 1977. He was elected president for the first time in 1978. As president, he presided over meetings, oversaw the entire fair, and appointed all committee chairpersons. He was also concessions manager for over 40 years – a job that entailed acquiring and finding a location for each vendor that came to the fair.

As a young boy, the West End Fair was a large part of Donald's life. He grew up on a 60-acre farm, and was influenced by his father Harley Everett, who was one of the founders of the fair. Donald helped wherever he was needed, from preparing the grounds, to parking, to cleaning up after the fair was over. He mentioned that his pay was a hamburger, and he felt proud to be given that.

The fair was a labor of love for him, and continues to be throughout his 90 years. Donald always included a bit of levity into his meetings. There were many directors who looked forward to his good-natured teasing.

Donald Everett has invested his time, his expertise, and his undying energy to produce the best fair year after year. The newly elected officers of the West End Fair Association can only hope to continue the legacy of Donald Everett.



Our trained caregivers are responsible for providing clients with the best in home care to make your day to day life as simple as possible. Call us today and find out what we can do to help you.

Because There's No Place Like Home



LICENSED & BONDED INSURED

Our Services Include:

EOE

Meal Preparation • Transportation • Lt. Housekeeping
Personal Grooming & Dressing • Overnight Supervision • Companionship

KEEPING SENIORS INDEPENDENT
101 Timberlane Drive ~ Bangor, PA
610-881-4500 or 610-588-6000

Attention Washington Township Residents

The Board of Supervisors is Seeking Candidates to Fill the Following Vacancies

PLANNING COMMISSION MEMBER

The Washington Township Planning Commission is responsible for making recommendations on development and growth to the Board of Supervisors, consistent with the Township's Comprehensive Plan. The Planning Commission meets the 3rd Tuesday of each month at 7:00 pm.

ZONING HEARING BOARD, ALTERNATE MEMBER

The Washington Township Zoning Hearing Board is responsible for rendering decisions upon requests for variances and special exceptions to the Washington Township Zoning Ordinance. The Zoning Hearing Board meets the 1st Monday of each month at 6:30 pm.

RECREATION COMMITTEE MEMBER

The Board of Supervisors is seeking volunteer members for the Recreation Committee. The goal of the Washington Township Recreation Committee is to enhance the recreational resources available to residents. This Committee meets the 4th Tuesday of each month at 7:00 pm.

Washington Township residents interested in filling any of these vacancies are asked to submit a letter of interest to:

Washington Township Board of Supervisors
1021 Washington Blvd.
Bangor, PA 18013



Red Cross Telethon Raise \$80,000

By Michael Ortoski

MONROE COUNTY - This week Senator Scavello took part in the American Red Cross Pocono Mountains Annual Telethon. Through the efforts of many generous donors, they were able to raise over \$80,000 to assist with disaster relief throughout our region. The Red Cross helps thousands of individuals every year throughout our region by aiding victims of natural disasters, coordinating blood drives, installing free smoke alarms, training volunteers in first aid and so much more. "Thank you all for your committed work" said Scavello.